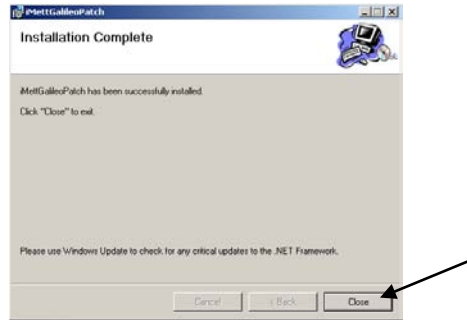
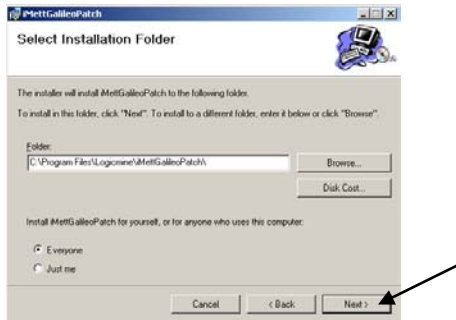
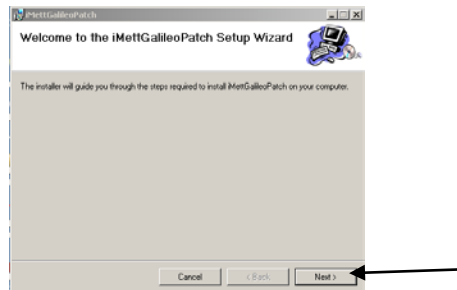
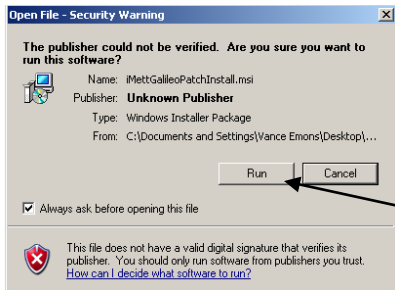
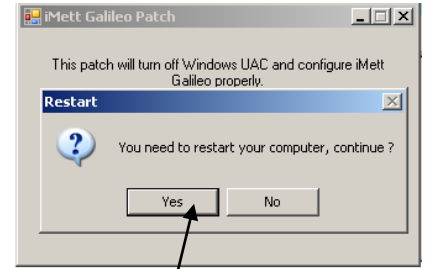
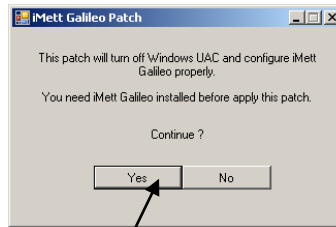


## Instructions to Install the iMett Patch for Windows Vista and Windows 7

1. You will need to install the patch on the computer that will be running the iMett software. Put the iMettGalileoPatchInstall.msi file/program on the computer and install it. Click on the following buttons to install. Unzip the program if it is zipped.



2. Once the patch is installed, you will need to run the program. Go to Windows START-ALL PROGRAMS and click on the iMett Galileo patch.



3. Once your computer is restarted, you will get a message stating that the patch was successful.

Specifically the patch will do:

- Turn off Windows 7 UAC (user access control)
- Create a new folder C:\BDEShare and set permissions allowing BDE to use it
- Change BDE shared memory address, avoiding conflicts with OS.