



THE POSTURAL LINE

The ProKin E is a dynamic and static balance board training and assessment system capable of single and double leg movements. Paired with the very simple and intuitive TecnoBody software it is easy for fitness and rehabilitation professionals to evaluate and assess each client with precise and detailed data to use to measure progress and create powerful and specific training plans and programs.

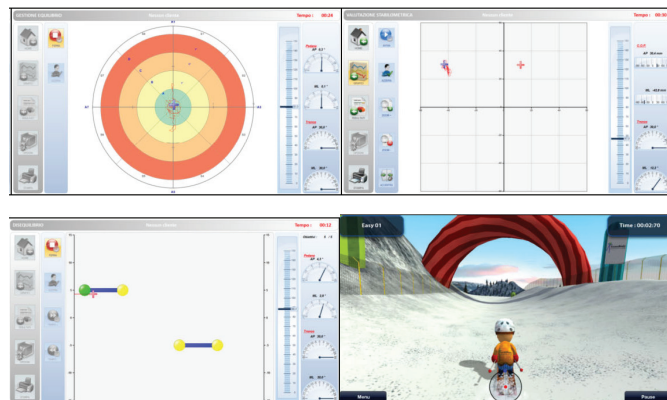


PROKIN E



- Standard Feature
- Optional Feature

PROKIN E		
USER INTERFACE	16" Touchscreen Display	●
	Adjustable Display Height	●
	Processor Frequency	1.8 GHz
	RAM Memory	4GB
	Wireless Keyboard & Mouse	●
	Wireless Printer	○
	TecnoBody Management System	○
SPECIFICATIONS	User Weight Capacity	330 lb.
	Dynamic Platform	22" Diameter (55 cm)
	Support Platform	43" x 43" (110 x 110 cm)
	Unit Weight	154.32 lb. (shipping weight 200 lb.)
	Width	35.4" (90 cm)
	Length	47.2" (120 cm)
	Height	72.8" (185 cm)
	Trunk Sensor	○
	Wrapping Upper Supports	
	Safety Step	
	Trunk Balance Seat	
	110/240 Vac 20 Amp	●
	Warranty	1 Year All Components 1 Year Labor Lifetime Software



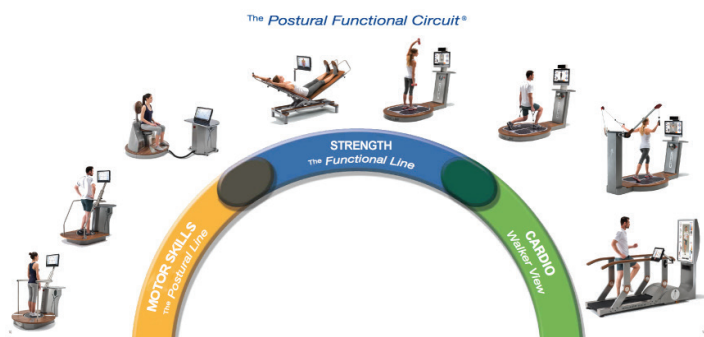
SOFTWARE

- Assessment modules including balance bipedal & comparative
- Training modules including dynamic, skill and equilibrium
- Patient data file
- Games including equilibrium and flight simulator



FUNCTIONALITY

- Dynamic balance board
- Single and double leg stance
- 10 different selectable levels of instability
- Balance tilt measurement: +/- 15° (maximum resolution of 0.1° and 0.5° precision)
- Ability to connect to TecnoBody Management System by TecnoBody Key



Specifications subject to change without written notice.
Warranties outside the U.S. may vary - Please contact your dealer for details.

FOR ADDITIONAL INFORMATION ABOUT THIS PRODUCT

VISIT WWW.WOODWAY.COM OR CALL 800.WOODWAY TO TALK TO A REPRESENTATIVE.