

OPTOJUMP

next

OptoJump is a state of the art system of analysis and measurement designed for the development of a specific and customized training program for athletes and patients based exclusively on precise objective data. OptoJump allows coaches, trainers, therapists and researchers to constantly test and monitor the user making it possible to assess the abilities or physical fitness of an athlete or patient in a simple and immediate way.

The OptoJump system is extremely versatile, portable and it can be used on a treadmill or over ground and sets up in minutes.

OPTOJUMP NEXT MAKES IT POSSIBLE:

- ASSESS an athlete's performance and physical condition
- IDENTIFY any muscular deficiencies and measure tolerance to various work-loads
- DEVELOP & APPLY customized and diversified training based on the test results
- REPORT - Periodically check the results of training
- CREATE a database of athletes in order to compare them with each other or to compare the results of a particular athlete in different periods of time in order to objectively determine the results of training
- PREVENT - examine the physical condition of an athlete after an injury, to develop specific actions for rehabilitation and check it's progress
- MOTIVATE athletes by giving them tangible proof of the progress made, thus stimulating fruitful competition inside the group
- SIMPLIFY - Significantly reduce the trainer's workload, at the same time allowing him/her to retrieve at any time results of tests performed even months before
- COMPARE - To make use of objective "judgment" when talent-scouting or choosing athletes



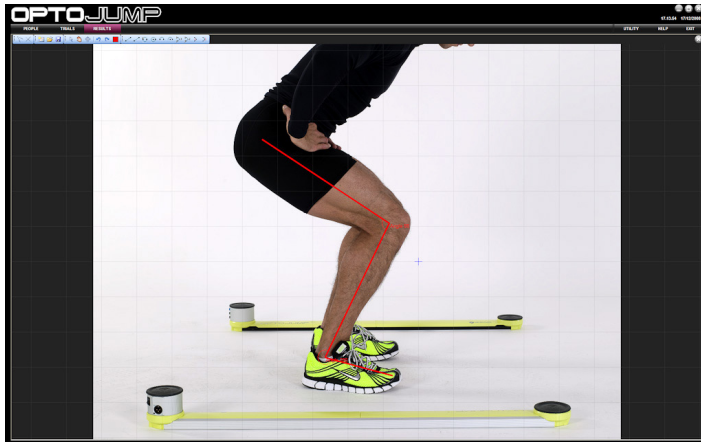
For The Long Run®

WOODWAY®

WOODWAY WORLD HEADQUARTERS
W229 N591 Foster Court Waukesha, WI 53186
PHONE (800) 966 - 3929 | FAX (262) 522 - 6235
WOODWAY.COM

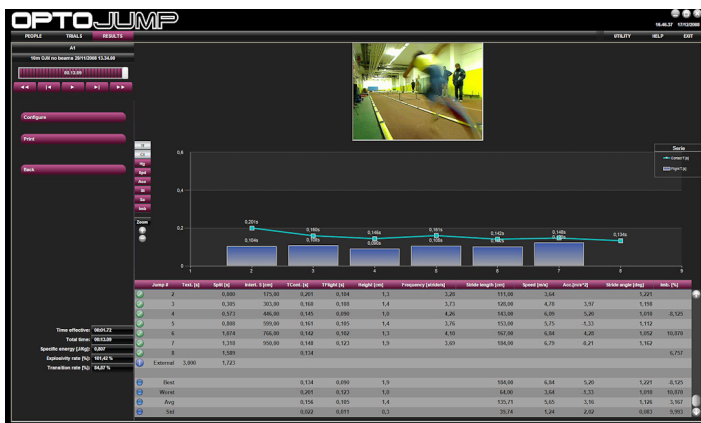
WOODWAY INTERNATIONAL GMBH
Steinackerstrasse 20, D-79576 Weil am Rhein, Germany
PHONE +49 - 7621 - 940 999 - 0 | FAX +49 - 7621 - 940 999 - 40
WOODWAY.DE

OPTOJUMP



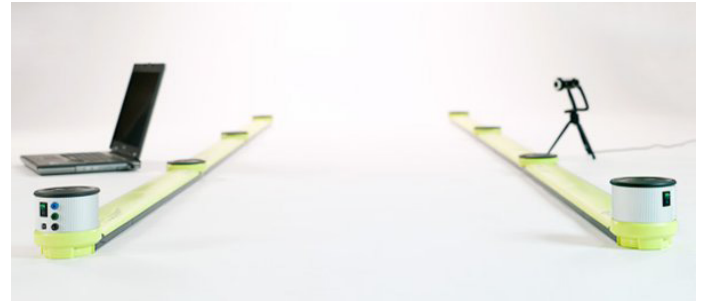
INSTANT FEEDBACK

With the OptoJump's instant data feedback and video analysis coaches, practitioners and trainers can utilize measurable statistics and visual tools to quickly identify deficiencies & develop targeted training protocols. Ongoing assessments provide accurate monitoring of progress and help prevent injuries.



TESTING, RESULTS & ANALYSIS

- Predefined tests or create custom tests
- User receives three types of feedback in real time: numerical, graphical and video
- Images to data comparisons
- Frame by frame or still picture
- Ability to export all data



INTEGRATED INFRARED & VIDEO ANALYSIS

- The OptoJump system utilizes precision optical measurements between two light bars to gather data.
- Dual video cameras sync with measurements to provide visual inspections that can be replayed



EFFECTIVELY MEASURE GAIT CYCLE

- Stride & Step length
- Stance & Swing Phase
- Single & Double Support
- Contact & Flight Time

OPTOJUMP SYSTEM

- 2 OptoJump Skis (RX and TX)
- 2 battery cords (1 for each ski)
- 2 cameras, tripods and cable connections
- 2 year hardware warranty
- Carrying bag for storage & portability

FOR ADDITIONAL INFORMATION ABOUT THIS PRODUCT
VISIT WWW.WOODWAY.COM OR CALL 800.WOODWAY TO TALK TO A REPRESENTATIVE.